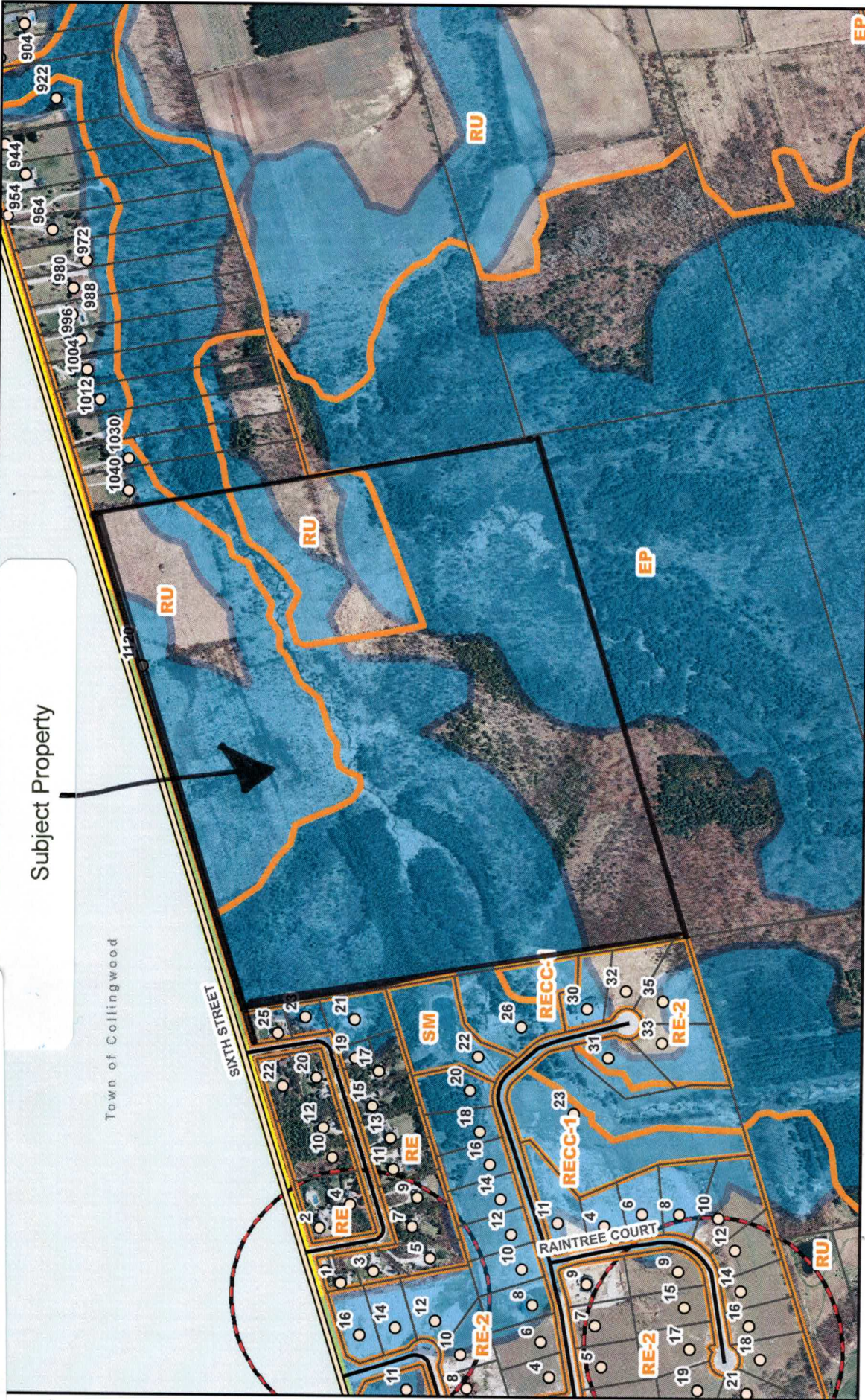


Subject Property

Town of Collingwood



**Boundaries**

- Assessment Parcels
- Ownership Parcels
- Open Owned Lands
- Planning Boundary
- Waterfront Boundaries
- Gas and Concessions
- Major Escarpment Boundary
- Chacknew Township

**Roads**

- Provincial Roads
- County Roads
- Local Roads
- Private Seasonal Roads
- Private Roads
- Private Closed Roads

**Infrastructure**

- Hydro
- Utility Line
- Active Railway
- Non-Active Railway
- Municipal Drains - NYCA

**Landscape Features**

- Ponds - NYCA
- Water Courses - NYCA
- County Forests
- Provincial Parks
- Vegetation
- Wooded Areas
- Urban Areas

**Zoning Overlays**

- Arch Sites
- FPSP Hazard Land and Special Policy
- FP Hazard Land
- MHPA (Mild Hazard Protection Area)
- MHPA (Major Hazard Protection Area)
- MHPA (Minor Aggregate Assessment Area)
- MHPA (Major Aggregate Assessment Area)
- Commercial Transition Areas

**Terrain Land Fabric Layer**

- Contours and Right of Way Limits
- Contours
- Leaseland Parcel Boundary
- Geographic Township Fabric Limits
- Water Body Limits
- Political Boundary Limits
- Control Control Line Mark
- Reference Line Limits
- Other Plan Limits

**Official Plan**

- Agricultural
- Commercial
- Commercial Transition Area
- Encouraged - Residential Area
- Encouraged - Recreational Area
- Encouraged - Rural Area
- Urban Residential
- Urban Commercial
- Urban Development

**Other Land Areas**

- Overland - Hazard Land Areas
- Overland - Natural Heritage Areas
- Overland - Wetland Areas
- Industrial
- Industrial - Recreational Area
- Industrial - Recreational Area
- Open Space
- Residential
- Road
- Special Policy - Residential
- White Disposed Industrial



Scale: 1:7,389

**CLEARVIEW TOWNSHIP**  
Established 1994