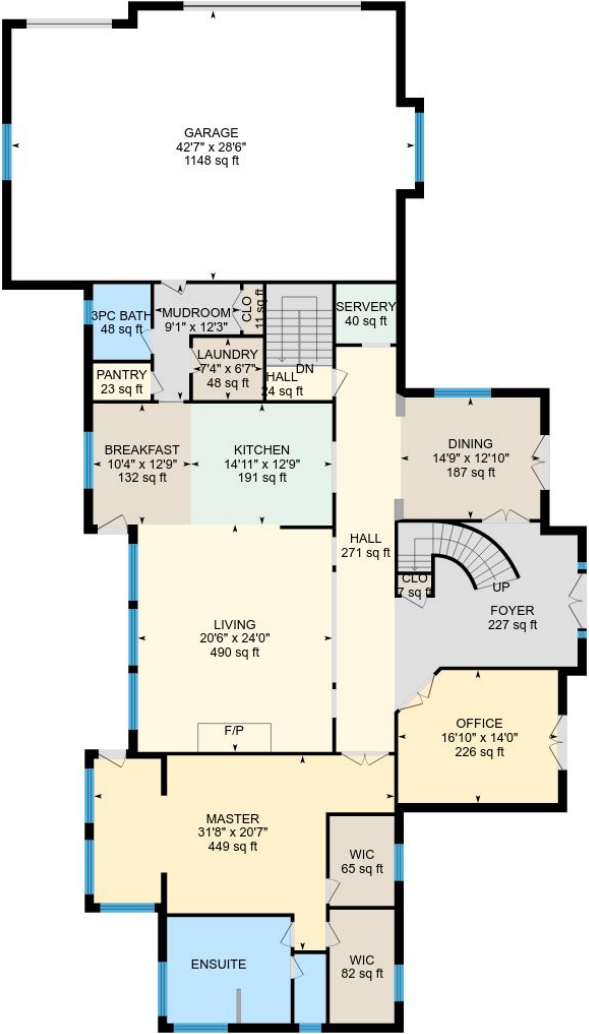
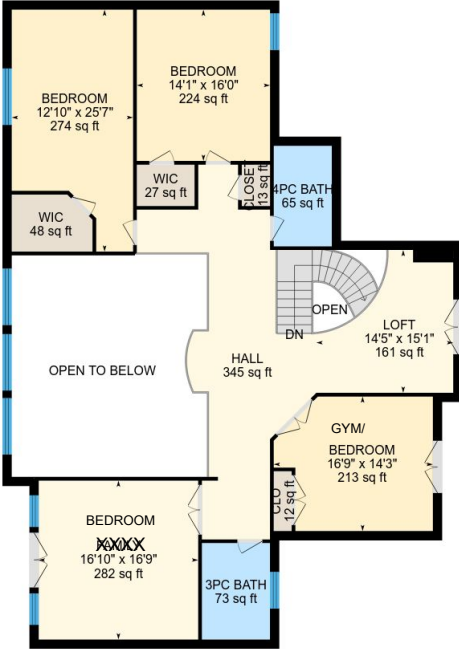


# 6827 Nottawa Side Rd E, Nottawa, ON

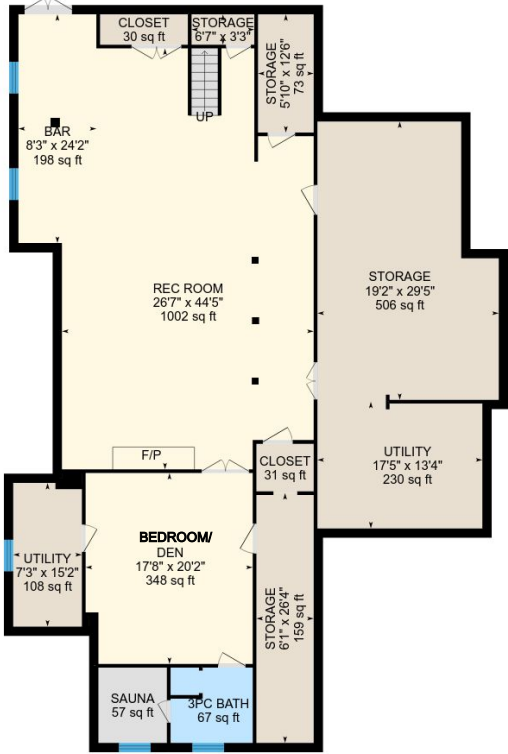
Main Building: Total Exterior Area Above Grade 5416 sq ft



**Main Floor**  
Exterior Area 3275 sq ft



**2nd Floor**  
Exterior Area 2141 sq ft



**Basement (Below Grade)**  
Exterior Area 3209 sq ft

0 8 16  
ft

# 6827 Nottawa Side Rd E, Nottawa, ON

**Main Floor**    Total Exterior Area 3275 sq ft  
Total Interior Area 3008 sq ft



0 6 12  
ft

PREPARED: Jan, 2018

White regions are excluded from total floor area. All room dimensions and floor areas must be considered approximate and are subject to independent verification. For method of measurement please see <https://youriguide.com/measure/>.

# 6827 Nottawa Side Rd E, Nottawa, ON

**2nd Floor** Total Exterior Area 2141 sq ft  
Total Interior Area 1864 sq ft



0 4 8  
ft

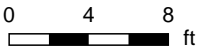
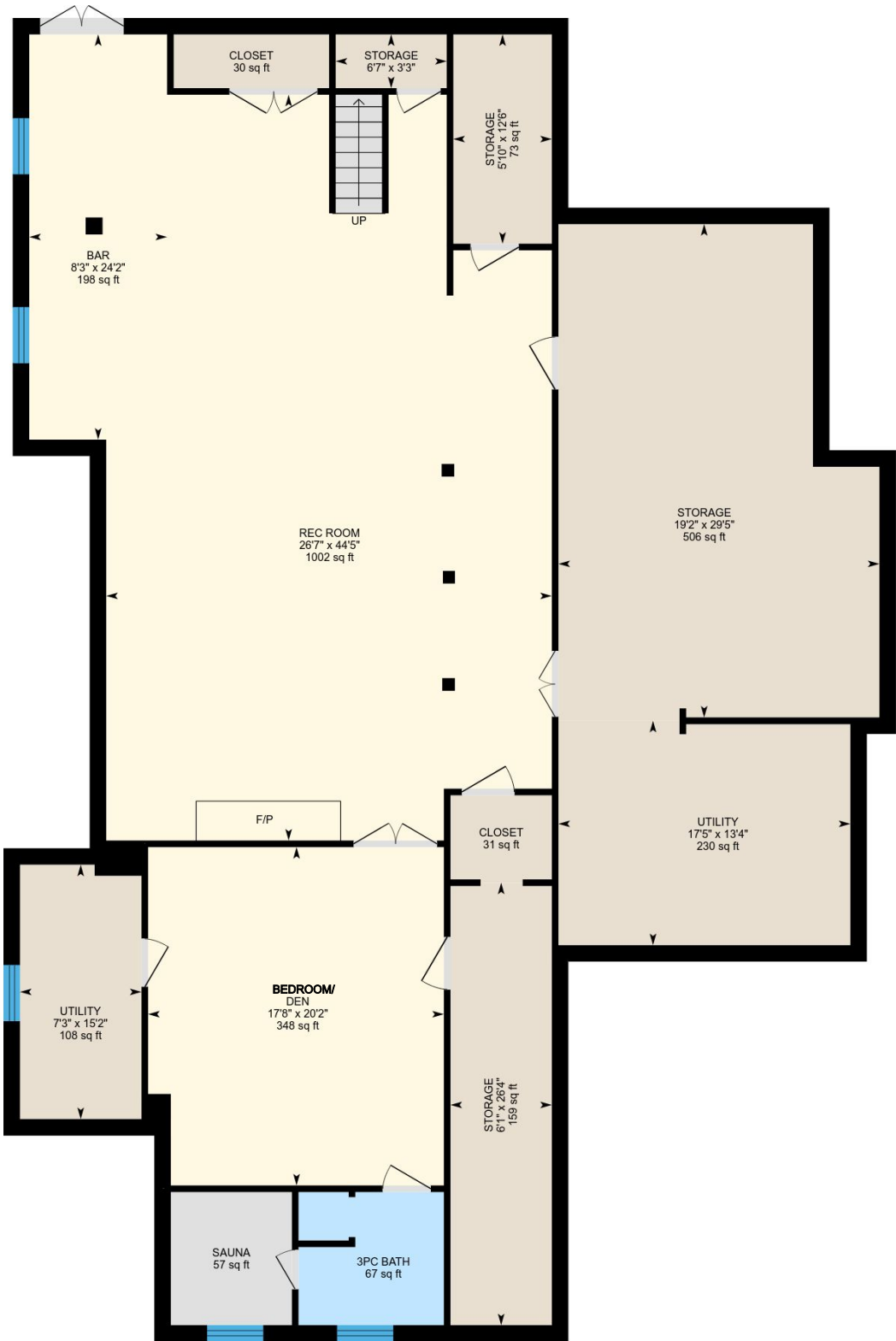
PREPARED: Jan, 2018



White regions are excluded from total floor area. All room dimensions and floor areas must be considered approximate and are subject to independent verification. For method of measurement please see <https://youriguide.com/measure/>.

6827 Nottawa Side Rd E, Nottawa, ON

Basement    Total Exterior Area 3209 sq ft  
Total Interior Area 2944 sq ft



PREPARED: Jan, 2018



White regions are excluded from total floor area. All room dimensions and floor areas must be considered approximate and are subject to independent verification. For method of measurement please see <https://youriguide.com/measure/>.

## Property Details

### Room Measurements

Only major rooms are listed. Some listed rooms may be excluded from total interior floor area (e.g. garage). Room dimensions are largest length and width; parts of room may be smaller. Room area is not always equal to product of length and width.

### Main Building

#### MAIN FLOOR

Foyer: 227 sq ft  
Hall: 24 sq ft  
Laundry: 7'4" x 6'7" | 48 sq ft  
Serving: 40 sq ft  
Mudroom: 9'1" x 12'3"  
Pantry: 23 sq ft  
Kitchen: 14'11" x 12'9" | 191 sq ft  
Clo: 11 sq ft  
Garage: 42'7" x 28'6" | 1148 sq ft  
Wic: 82 sq ft  
Ensuite: 13'1" x 11'3" | 145 sq ft  
Wic: 65 sq ft  
Office: 16'10" x 14'0" | 226 sq ft  
Master: 31'8" x 20'7" | 449 sq ft  
Hall: 271 sq ft  
Dining: 14'9" x 12'10" | 187 sq ft  
Clo: 7 sq ft  
Living: 20'6" x 24'0" | 490 sq ft  
Breakfast: 10'4" x 12'9" | 132 sq ft  
3pc Bath: 6'1" x 8'0" | 48 sq ft

#### 2ND FLOOR

Bedroom: 12'10" x 25'7" | 274 sq ft  
Wic: 48 sq ft  
Bedroom: 14'1" x 16'0" | 224 sq ft  
Wic: 27 sq ft  
4pc Bath: 6'2" x 10'7" | 65 sq ft  
Closet: 13 sq ft  
Bedroom: 16'9" x 14'3" | 213 sq ft  
Clo: 12 sq ft  
Bedroom: 16'10" x 16'9" | 282 sq ft  
3pc Bath: 7'2" x 10'2" | 73 sq ft  
Hall: 345 sq ft  
Loft: 14'5" x 15'1" | 161 sq ft

#### BASEMENT

Rec Room: 26'7" x 44'5" | 1002 sq ft

### Floor Area Information

For explanation of floor area calculations and method of measurement please see <http://youriguide.com/measure/>

### Main Building

Building Perimeter Wall Thickness: 11.8 in

#### MAIN FLOOR

Interior Area: 3008 sq ft  
Perimeter Wall Length: 271 ft  
Exterior Area: 3275 sq ft

#### 2ND FLOOR

Interior Area: 1864 sq ft  
Perimeter Wall Length: 281 ft  
Exterior Area: 2141 sq ft

#### BASEMENT (Below Grade)

Interior Area: 2944 sq ft  
Perimeter Wall Length: 269 ft  
Exterior Area: 3209 sq ft

### Total Above Grade Floor Area

Main Building Interior: 4873 sq ft

**Main Building Exterior: 5416 sq ft**

# 6827 Nottawa Side Rd E, Nottawa, ON

---

## Room Measurements

Only major rooms are listed. Some listed rooms may be excluded from total interior floor area (e.g. garage). Room dimensions are largest length and width; parts of room may be smaller. Room area is not always equal to product of length and width.

Bar: 8'3" x 24'2" | 198 sq ft

Utility: 17'5" x 13'4" | 230 sq ft

Closet: 31 sq ft

Den: 17'8" x 20'2" | 348 sq ft

Utility: 7'3" x 15'2" | 108 sq ft

3pc Bath: 8'8" x 7'11" | 67 sq ft

Sauna: 57 sq ft

Storage: 6'7" x 3'3"

Storage: 5'10" x 12'6" | 73 sq ft

Storage: 6'1" x 26'4" | 159 sq ft

Closet: 30 sq ft

Storage: 19'2" x 29'5" | 506 sq ft

## Floor Area Information

For explanation of floor area calculations and method of measurement please see <http://youriguide.com/measure/>