

STUDY PURPOSES ONLY

PLAN OF SURVEY OF  
PART OF LOT 25  
CONCESSION 7  
(FORMERLY TOWNSHIP OF COLLINGWOOD)  
TOWN OF THE BLUE MOUNTAINS  
COUNTY OF GREY

SCALE 1:500  
ZUREK, DMO, PATTEN & THOMSEN LTD.  
2008

METRIC  
DISTANCES ON THIS PLAN ARE IN METRES AND CAN  
BE CONVERTED TO FEET BY DIVIDING BY 0.3048

PART 1 OF 4 PARTS		GREY VACANT LAND
SHEET 1 OF 1 SHEET		CONDOMINIUM PLAN No. 81
INDEX OF PARTS		
PART	SHEET	DESCRIPTION
1	1	GENERAL SURVEY AND DESCRIPTION OF THE MEASUREMENT ON LEVEL 1
2	N/A	DESCRIPTION OF MEASUREMENT OF ELEVATION AND PARTIALS OF THE COMMON ELEMENTS ON LEVEL 1
3	N/A	ARCHITECTURAL PLAN
4	N/A	STRUCTURAL PLAN

LEVEL 1  
UNITS 1 TO 7 INCLUSIVE  
REGISTERED IN THE LAND REGISTRY OFFICE FOR  
THE LAND TITLES DIVISION OF GREY NO. 16  
AT 10:00 O'CLOCK ON THE 23<sup>RD</sup> DAY OF SEPTEMBER  
2008.  
*L. MacConachie*  
DEPUTY LAND REGISTRAR

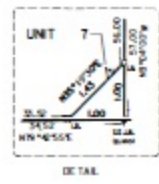
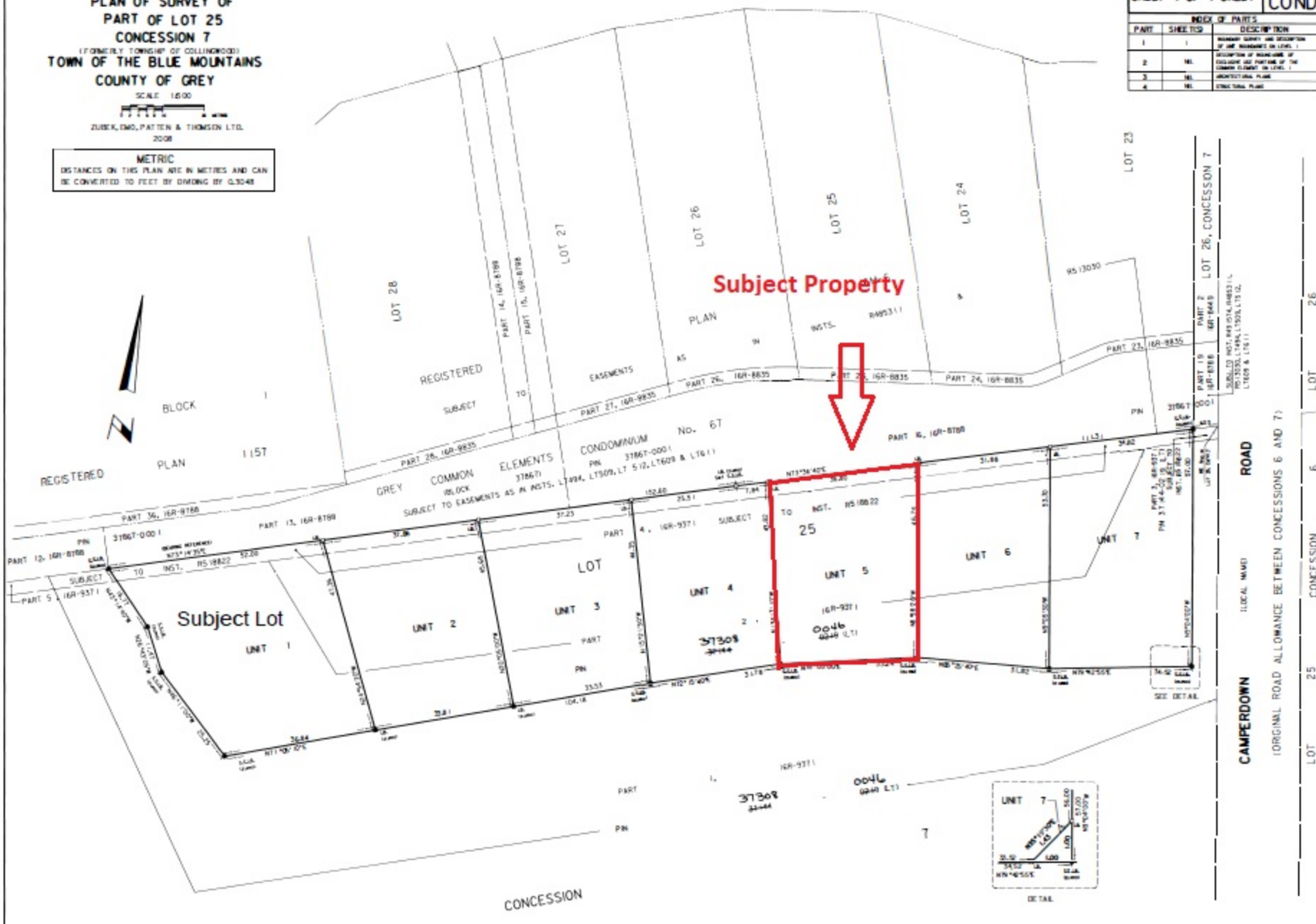
**SURVEYOR'S CERTIFICATE**  
I CERTIFY THAT:  
1. THIS SURVEY AND PLAN ARE CORRECT AND IN ACCORDANCE WITH THE CONDOMINIUM ACT, 1990, THE SURVEYORS ACT, THE SURVEYORS ACT AND THE LAND TITLES ACT AND THE REGULATIONS MADE UNDER THEM.  
2. THE SURVEY WAS COMPLETED ON THE 23<sup>RD</sup> DAY OF SEPTEMBER 2008.  
SEPTEMBER 23, 2008 *L. Patten* O.L.S.  
LYNN H. PATTEN  
ONTARIO LAND SURVEYOR  
COLLINGWOOD

DECLARATION REGISTERED AS No. *6011018*  
THIS PLAN COMPRISES PART OF PN 31867-0001  
SCHEDULE OF APPOINTMENT AND SERVIENT INTERESTS (MORTGAGE TO CLASSES 5, 6 AND 8) OF THE CONDOMINIUM ACT, 1990

PART/BLOCK	PLAN	DESCRIBED IN	NOTES
UNIT 1	16R-9371	UNIT 1	
UNIT 2	16R-9371	UNIT 2	
UNIT 3	16R-9371	UNIT 3	
UNIT 4	16R-9371	UNIT 4	
UNIT 5	16R-9371	UNIT 5	
UNIT 6	16R-9371	UNIT 6	
UNIT 7	16R-9371	UNIT 7	

**NOTES**  
BEARINGS HEREON ARE ASTRONOMIC AND ARE REFERRED TO THE BEARING OF THE SOUTHERLY LIMIT OF GREY COMMON ELEMENTS CONDOMINIUM PLAN No. 67 BEING N73°14'35"E IN ACCORDANCE THEREWITH.  
● DENOTES SET  
○ DENOTES FOUND  
○ S.A. DENOTES STANDARD IRON BAR  
○ I.A. DENOTES IRON BAR  
○ S.S.I. DENOTES SHORT STANDARD IRON BAR  
○ C.I. DENOTES CUT CROSS  
MONUMENTS CONTROLLING THE EXTENT AND LOCATION OF THE UNITS ARE THE IRON BARS SHOWN HEREON AND MORE PARTICULARLY DESCRIBED IN SCHEDULE C OF THE DECLARATION.  
— DENOTES BOUNDARIES OF THE UNITS AND THE COMMON ELEMENTS

**CERTIFICATE OF DECLARANT**  
THIS IS TO CERTIFY THAT THE PROPERTY INCLUDED IN THIS PLAN HAS BEEN LAID OUT INTO UNITS AND COMMON ELEMENTS IN ACCORDANCE WITH MY INSTRUCTIONS.  
DATED AT COLLINGWOOD  
THIS 23<sup>RD</sup> DAY OF SEPTEMBER 2008  
DECLARANT: HEDGE ESTATES LAND CORPORATION  
FOR *Russell Allan*  
RUSSELL ALLAN  
DIRECTOR  
HAVE THE AUTHORITY TO BIND THIS CORPORATION  
THIS FINAL PLAN OF CONDOMINIUM IS APPROVED BY THE COUNTY OF GREY UNDER SECTION 51(5)(b) OF THE PLANNING ACT, R.S.O. 1990 AS AMENDED.  
THIS 23<sup>RD</sup> DAY OF SEPTEMBER 2008  
*Russell Allan*  
DIRECTOR OF PLANNING



ZUREK, DMO  
**PATTEN & THOMSEN**  
LTD.  
ONTARIO LAND SURVEYORS  
39 STEWART ROAD  
COLLINGWOOD, ONTARIO L3Y 4K7  
PHONE: (705) 465-4310 FAX: (705) 445-5866  
JOB NO. 14-89-12 SURVEY FOR: HEDGE ESTATES LAND CORP.